



ECONOMIC INDICATORS

6.5 ↑

Q2 2017 Gross Domestic Product

3.40 ↑

September 2017 Inflation Rate

10.2 ↓

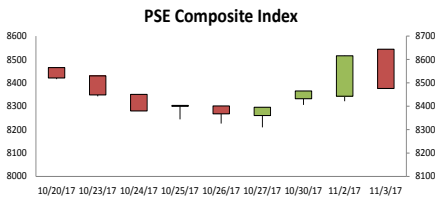
Q3 2017 Consumer Confidence

7.6 ↓

Q3 2017 Auto-buying Intention

51.21 ↑

Daily Peso – Dollar Exchange Rate



MACROECONOMIC SNAPSHOT

ASEAN business summit to discuss reduction of non-tariff barriers

Businesses will push for the reduction or removal of non-tariff barriers at the upcoming Association of South-east Asian Nations (ASEAN) Summit in a bid to fully realize the gains of liberalization.



[FULL STORY HERE](#)

BOC posts P42 B record high collection in Oct

The Bureau of Customs (BOC) generated P42 billion in revenue in October, marking the highest monthly collection recorded in the bureau's history, Customs Commissioner Isidro Lapeña said over the weekend.



[FULL STORY HERE](#)

FINANCIAL TRENDS

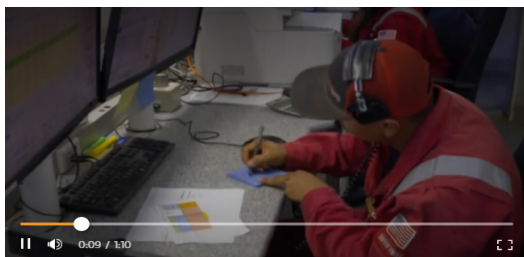
Peso likely to continue fall as imports surge

The peso is seen to further depreciate as the surge in imports to support the government's infrastructure buildup brought the country's current account to a deficit, according to Washington-based Institute for International Finance (IIF).



[FULL STORY HERE](#)

GLOBAL WATCHLIST



U.S. jobs growth rebounds

The U.S. economy added 261,000 jobs in October, bouncing back from September that was ravaged by hurricanes. But as Fred Katayama reports, wage growth was flat.

[FULL STORY HERE](#)

INDUSTRY NEWS

NLEX, STAR Tollway to begin charging higher toll rates today

The operators of North Luzon Expressway (NLEX) and Southern Tagalog Arterial Road (STAR) Tollway will start charging higher toll rates starting today, November 6, 2017, after winning a long sought-after approval from the Toll Regulatory Board (TRB), the government agency that regulates expressways.



[FULL STORY HERE](#)

INTERNATIONAL

Electric Taxis Undergoing Final Testing in London

A new chapter begins for London's famous black cabs with the first all-electric taxis taking to the streets in the final phase of testing.



[FULL STORY HERE](#)

